



ASTRONERGY
A CHNT COMPANY

ASTRO 6 Semi

Create Sustainable and Efficient Green Energy

CHSM66M-HC
Monofacial Series (210)

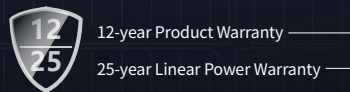
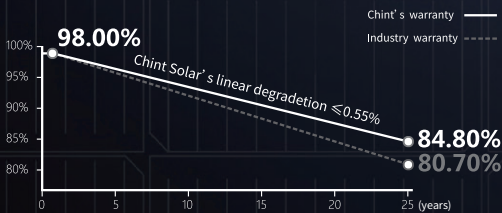
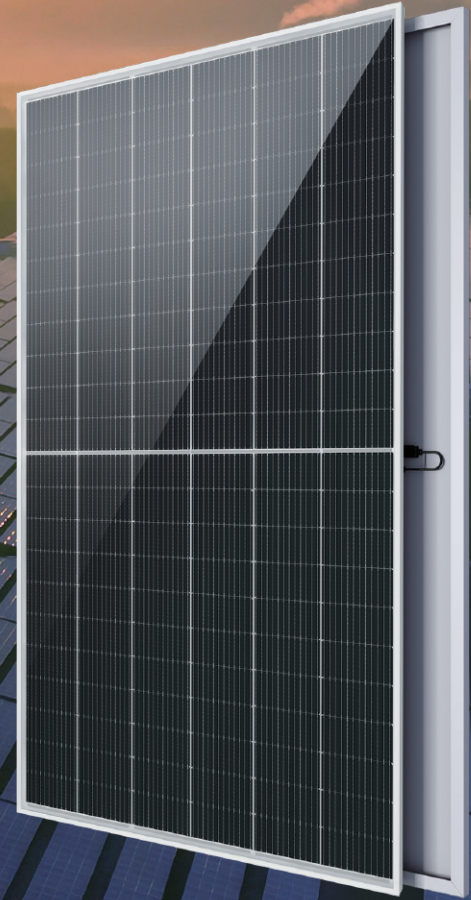
650~665W

PERC+ / Multi-busbar / Half-cut

Non-destructive cutting

PID resistance

Lower BOS cost & LCOE



ISO 9001:2015:ISO Quality Management System
ISO 14001:2015:ISO Environment Management System
ISO 45001:2018:Occupational Health and Safety
The first solar company which passed the Nord IEC/TS 62941 certification audit.



Tier 1
BloombergNEF



650~665W

POWER RANGE

0~+5W

POWER TOLERANCE

21.4%

MAX MODULE EFFICIENCY

≤ 2.0%

FIRST YEAR POWER DEGRADATION

≤ 0.55%

YEAR 2-25 POWER DEGRADATION

Electrical Specifications

STC: Irradiance 1000W/m², Cell Temperature 25° C, AM=1.5

	650	655	660	665
Rated output (P _{mpp} / W _p)	650	655	660	665
Rated voltage (V _{mpp} / V)	37.45	37.65	37.85	38.05
Rated current (I _{mpp} / A)	17.36	17.41	17.45	17.50
Open circuit voltage (V _{oc} / V)	45.28	45.48	45.68	45.88
Short circuit current (I _{sc} / A)	18.43	18.48	18.53	18.58
Module efficiency	20.9%	21.1%	21.2%	21.4%

NMOT: Irradiance 800W/m², Ambient Temperature 20° C, AM=1.5, Wind Speed 1m/s

	489.5	493.2	497.0	500.7
Rated output (P _{mpp} / W _p)	489.5	493.2	497.0	500.7
Rated voltage (V _{mpp} / V)	35.09	35.28	35.46	35.63
Rated current (I _{mpp} / A)	13.96	13.99	14.03	14.06
Open circuit voltage (V _{oc} / V)	42.55	42.75	42.95	43.15
Short circuit current (I _{sc} / A)	14.82	14.87	14.92	14.97

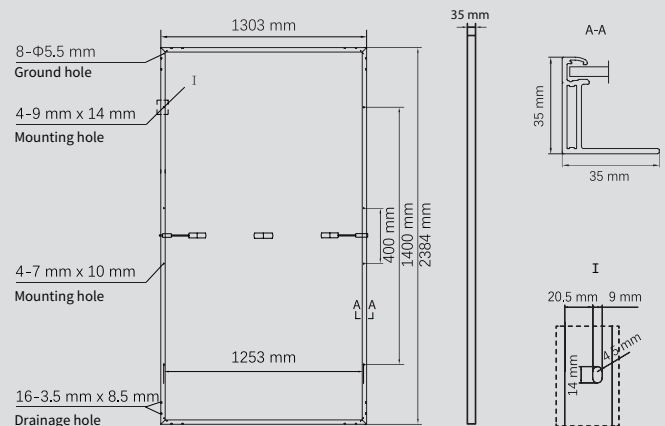
Temperature Ratings (STC)

Temperature coefficient (P _{mpp})	-0.34%/°C	No. of diodes	3
Temperature coefficient (I _{sc})	+0.04%/°C	Junction box IP rating	IP 68
Temperature coefficient (V _{oc})	-0.25%/°C	Max. series fuse rating	30 A
Nominal module operating temperature (NMOT)	41±2°C	Max. system voltage (IEC/UL)	1500V _{DC}

Operating Parameters

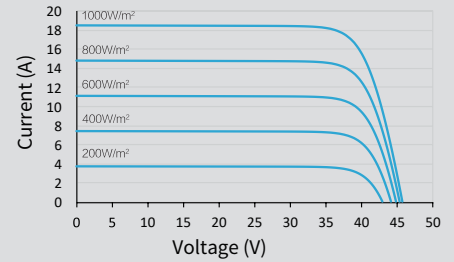
Mechanical Specifications

Outer dimensions (L x W x H)	2384 x 1303 x 35 mm
Cell Type	P type Mono-crystalline
No. of cells	132 (6*22)
Frame technology	Aluminum, silver anodized
Front glass thickness	3.2 mm
Cable length (IEC/UL)	Portrait: 350 mm; Landscape: 1400 mm
Cable diameter (IEC/UL)	4 mm ² / 12 AWG
① Maximum mechanical test load	5400 Pa (front) / 2400 Pa (back)
Connector type (IEC/UL)	HCB40 / MC4-EVO2 (optional)
Module weight	34.8 kg
Packing unit	31 pcs / box (Subject to sales contract)
Weight of packing unit (for 40' HQ container)	1125 kg
Modules per 40' HQ container	527 pcs

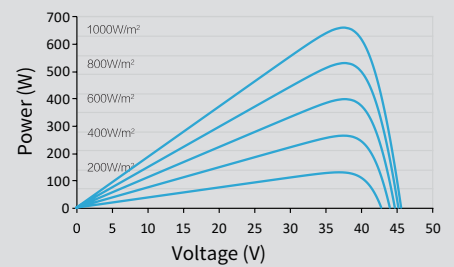


Curve

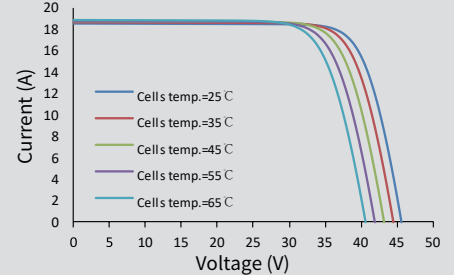
Current-Voltage (660W)



Power-Voltage (660W)



Current-Voltage (660W)



① Refer to Astronergy crystalline installation manual or contact technical department. Maximum Mechanical Test Load=1.5×Maximum Mechanical Design Load.